

Reliability in Action

Wheeled Loader LG918

SDLG machines are built to be like the people that own them: hardworking, genuine and reliable. Cost effective, robust machines with fuel efficient engines that are easy to operate and easy to maintain.

Everything about SDLG is designed to give you the confidence that you can complete the job to a high standard and on schedule. And when you need parts or service, you can trust your SDLG dealer to deliver on our promise. When you buy SDLG, you're buying reliability: **Reliability in Action.**



www.sdlg-africa.com



trusted to deliver™

Babcock International Group: Tel (011) 397 1449 enquiries@babcock.co.za **Branches:** Bloemfontein (051) 432 1226 Cape Town (021) 380 4700 Durban (031) 700 6009 East London (043) 703 0400 George (044) 878 1035 Kimberley (053) 832 3443 Kitwe +26(0)21 221 6200 Lichtenburg (018) 633 6232 Lusaka +26 (0)21 221 6200 Middelburg (013) 246 2870 Maputo +268 21 321 824 Matola +268 21 900 120 Nacala +268 21 321 824 Nelspruit (013) 758 1864 Port Elizabeth (041) 407 5900 Richards Bay (035) 751 1180 Rustenburg (014) 592 6150 Solwezi +260 212 216 200 Steelpoort (013) 230 9054 Tete +268 21 321 824 Wolmaransstad (018) 596 1514 Windhoek +264 (0)81 693 7473 Zambia +260 21 221 6200 Independent Dealers: Botswana - Rola +27 (0)82 415 8758 Polokwane - RGR Services (015) 297 6711 Swaziland - Swazi Trac +268 251 84 555 Tzaneen - Swaarvoertuie (015) 307 5000 Zimbabwe - Conquip +263 4 485 543



Wheeled Loader LG918

LG918 Features

- Single Lever hydraulic pilot control
- 3rd hydraulic function
- Air conditioning
- ROPS/FOPS cabin
- 1 m³ bucket as standard
- Optional quick coupler
- Yuchai C4D80-T10 engine

Engine

Model	Yuchai YC4D80-T20
Type	In line, direct injection, water cooled
Maximum Torque	270 Nm
Rated Power	58 Kw

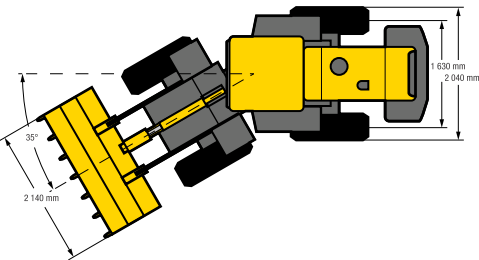
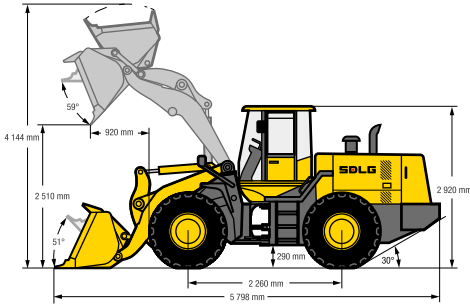
Specifications

Gross Vehicle Mass	6,200 kg
Rated bucket capacity (GP)	1m³
Rated load	1,800kg
Tractive force, maximum	≥56 kN
Breakout force, maximum	≥58 kN
Gradeability, maximum	30°
Dumping height, maximum	2,510 mm
Dumping reach, maximum	920 mm
General dimensions (LxWxH)	5,798 x 2,040 x 2,920 mm

Transmission System

Make/Model	BD05N1
Torque Converter Type	Single phase 3 element. Hydraulic
Torque Converter Ratio	3.43
Transmission Type	Fixed shaft power shift. High & low speed

Gear Shifts	2 Forward 2 Reverse
Maximum Speed	26.5 km/h



Fully enclosed ROPS/FOPS standard

Front (F) & Rear (R) Axles

Manufacturer	SDLG A506 (F&R)	Final Decelerate Type	Planetary gear reduction
Differential Reduction	Helical gear, first stage reduction		

Tyres

Type Specification	16/70-20	Rear Tyre Pressure	2.7 - 2.9 Bar
Front Tyre Pressure	3.3 - 3.5 Bar		

Steering System

Type	Articulated load-sensing hydraulic steering
Steering Angle	35° each side

Minimum Turning Radius

Outside Bucket	5,082mm	Outside Rear Wheel	4,546mm
----------------	---------	--------------------	---------

Hydraulic System

System Working Pressure	175 Bar	Total Time	≥ 9.1 s
Bucket Rise Time	≥ 4.8 s		

Brake System

Service Brake	Air over hydraulic disk brakes on 4 wheels
Parking Brake	Manual parking expanded

Fill Capacity

Fuel	120L	Hydraulic Oil	100L
------	------	---------------	------

Not all products are available in all markets. Under our policy of continuous improvement, we reserve the right to change specifications and design without prior notice. The illustrations do not necessarily show the standard version of the machine.