

Reliability in Action

Wheeled Loader LG958F



Wheeled Loader L958F



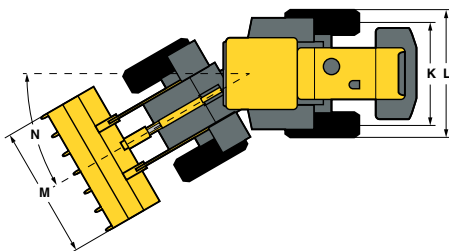
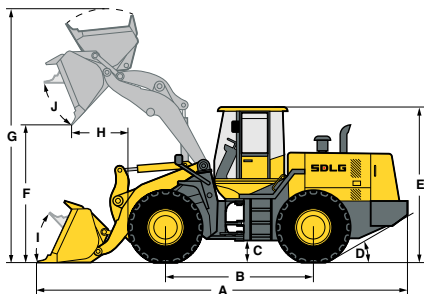
L958F

The new F-series wheeled loaders from SDLG offer high performance and reliability, backed up by a world-class support network.

The L958F comes with a modern design and many improvements, for a machine that really delivers. With its 3.2m³ bucket, this loader is engineered for high productivity and will give you an excellent return on your investment. All SDLG wheeled loaders are rigorously tested to ensure reliability in action.

- The design of the L958F ensures that service and maintenance is easily handled, with excellent accessibility throughout the machine.
- The single joystick guarantees precise, easy and comfortable operation of the loader arm and bucket, reducing operator fatigue.

- 1 High breakout force, a rated load of 5400 kg and a new 3.2m³ bucket design for improved efficiency and productivity. A wide range of available attachments ensures the machine's versatility.
- 2 A powerful and efficient 6 cylinder engine matched to a new SDLG transmission delivers maximum torque from the engine to the wheels.
- 3 Larger cab with 20 % more glazing for improved visibility, safety and efficiency. Superior air conditioning for greater operator comfort.
- 4 Optimised maintenance intervals now offer even better machine availability. The superb SDLG dealer network is there to support all your maintenance and repair needs.



| Description | Specification |
|----------------------------|---------------|
| Operating weight | 17 130 kg |
| Standard bucket capacity | 3.2 m³ |
| Lift capacity (rated load) | 5 400 kg |
| Maximum breakout force | 175 kN |

Dimensions

| | |
|---------------------------------|----------|
| A. Overall length | 8 280 mm |
| B. Wheel base | 3 300 mm |
| C. Ground clearance | 420 mm |
| D. Approach angle back | 30° |
| E. Overall height | 3 410 mm |
| F. Dump height | 3 100 mm |
| G. Overall operating height | 5 600 mm |
| H. Dump reach | 1 120 mm |
| I. Roll back angle ground level | 46° |
| J. Roll back level full height | 45° |
| K. Track width | 2 190 mm |
| L. Machine width | 2 785 mm |
| M. Bucket width | 3 024 mm |
| N. Steering angle | 38° |

Engine*

| | |
|-------------------------|---|
| Model | Dalian Deutz BF6M1013 |
| Type | Watercooled, 4 stroke, 6 cylinders in line, direct injection, turbo charged |
| Rated power (SAE J1349) | 165 kW @ 2 000 rpm |
| Maximum torque | 925 Nm |
| Cylinder bore stroke | 126 / 130 mm |

* Engine type may vary according to market

| Description | Specification |
|-------------|---------------|
|-------------|---------------|

Transmission

| | |
|----------------------|---|
| Type | SDLG VRT200, fixed shaft electric-hydraulic shift |
| Number of gears | 4 forward, 4 reverse |
| Maximum travel speed | Forward 38 km/h Reverse 38 km/h |
| Drive type | 4 wheel drive |
| Tyre dimension | 23.5 - 25 L5 |
| Tyre pressure | Front 55 - 58 psi Rear 46 - 49 psi |
| Service brake type | Air over hydraulic dry disc brake |
| Parking brake | Electric pneumatic caliper |

Service fill capacities

| | |
|-------------------------------|----------|
| Fuel | 300 L |
| Hydraulic oil | 240 L |
| Axles (main and final drives) | 2 x 30 L |
| Engine | 20 L |
| Transmission | 21.8 L |
| Brake system | 4 L |

Hydraulics

| | |
|------------------|-----------|
| Type | Gear pump |
| Boom lift time | 5.7 sec |
| Total cycle time | 10 sec |



Customer service is first priority

SDLG focuses on delivering outstanding customer service throughout a machine's life cycle. Its Integrated service management system monitors and analyzes the machine's functions to ensure that it is working at optimal capacity, while service alerts notify customers about forthcoming maintenance checks. SDLG's attention to detail is one of the ways it continues to be the industry's No. 1 in terms of customer service satisfaction.

Value-added service

SDLG's aftercare promise guarantees high quality service and offers experts who are on-hand to answer any questions or to solve problems. SDLG's service team uses advanced technology to support its maintenance checks in the field. Moreover, it aims to work with customers to define an efficient business solution.

Global service network

SDLG's worldwide service and spare parts network provides fast, efficient and professional round-the-dock service, anytime, anywhere. SDLG exceeds customers' expectations.



www.sdlg-africa.com



Babcock International Group: Tel +27 (0)11 230 7300 enquiries@babcock.co.za Branches: Botswana +267 390 2869 Bloemfontein +27 (0)51 432 1226 Cape Town +27 (0)21 380 4700 Durban +27 (0)31 700 6009 East London +27 (0)43 001 0090 George +27 (0)44 878 1035 Kathu / Kimberley +27 (0)53 832 3443 Middelburg +27 (0)13 001 1234 Mozambique +258 21 900 120 Nelspruit +27 (0)13 001 1280 Port Elizabeth +27 (0)41 407 5900 Richards Bay +27 (0)35 001 7660 Rustenburg +27 (0)14 592 6150 Steelpoort +27 (0)13 230 9054 Wolmaransstad +27 (0)18 596 1514 Windhoek +264 61 305 560/3 Zambia Kitwe +260 212 216 200 Lusaka +260 211 127 2926/28 Zimbabwe +27 (0)11 230 7300 **Independent Dealer:** Polokwane - RGR Services +27 (0)15 297 6711

www.babcock.co.za