

Equipment and Features

STANDARD EQUIPMENT

E6135H	
Engine	
Dalian diesel engine	S
Electronic unit injection pump	S
Turbocharger	S
Inter-cooler	S
Two-stage air filters	S
Three-stage fuel filters	S
Oil-water separator	S
Pre-heater	S
Electrical/Electronic control system	
Engine safe start with restart prevention	S
Oil-water separator level indicator	S
Automatic idling system	S
10 work modes	S
Central fuse box	S
High-capacity halogen work lights (Frame-mounted 2 & Boom-mounted 1 LH)	S
Battery, 24V	S
Master electrical disconnect switch	S
Starter Motor, 24V	S
Colour monitor and keypad	S
Acoustic travel alarm	S
Lock lever	S
Fault diagnosis interface (tool not included)	S
Hydraulic system	
Positive flow hydraulic system	S
Boom/arm/swing priority	S
Boom/arm regeneration	S
Boom/arm holding	S
Automatic two-speed travel motors	S
Cylinder/swing cushioning	S
Dust sealing	S
Hydraulic oil (ISO VG46)	S
Multi-stage filtration	S
Frame	
Reinforced revolving frame	S
Reinforced boom mounting	S
Heavy-duty anti-sintering bushings	S
Rear-view mirror	S

Access way with handrail	S
Centralized lubrication points	S
Undercarriage	
Durable "X" under-carriage	S
Greased and sealed track links	S
Reinforced carrier/top rollers	S
Steel track with triple grousers	S
Cab and interior	
Fabric operator seat with suspension	S
Seat belt	S
Joysticks	S
Radio with MP3/AUX	S
Master key	S
Hour meter	S
Sun visor	S
Dual armrests	S
Air conditioner	S
Sliding wind screen	S
Cup holder	S

OPTIONAL EQUIPMENT

E6135H	
Electrical/Electronic control system	
Fuel filler pump	0
Extra halogen work lights (Cab-mounted 1 / counterweight-mounted 1)	0
Rotating warning beacon	0
Rear-view camera	0
Burglar alarm	0
Hydraulic system	
High-temperature/low-temperature hydraulic oil module	0
Undercarriage	
600/700/800mm steel track	0
Attachment	
Larger bucket	0
Rock bucket	0
X1 pipes	0
X3 pipes	0
Side or top mounted breakers	0
Hydraulic crusher	0
Log grapple	0
Light front FOG (falling object guard)	0
Heavy front/top FOG	0

Reliability in Action



E6135H

Hydraulic Excavator

PART OF VOLVO GROUP SINCE 2007

SDLG is member of the Volvo Group and one of the largest manufacturers of construction machinery in China, with a wide network of dealerships and service workshops throughout the world.



EFQM
 Congratulations SDLG for winning
 EFQM Global Excellence Award
 One of the top three quality awards in the world

babcock™

Babcock International Group [SDLG Authorised Dealer]

19 Taljaard Road, Bartlett, Boksburg, South Africa
 Tel +27 (0) 11 230 7300 | enquiries babcock.co.za | www.babcock.co.za



POWERFUL YET ENERGY-SAVING



The high-torque, low-RPM DDE engine delivers both power and efficiency in 10 optimised work modes. The electronic unit pump (EUP) design features a high injection pressure and a good tolerance on fuel quality

SMOOTH OPERATIONS



E6135H uses a positive flow system, also comes with regeneration and priority functions, makes the machine reliable and highly efficient

SAFE AND COMFORTABLE



A variety of protective features improve man-machine safety. A spacious cabin provides a pleasing driving experience with excellent fields of vision, a powerful air conditioning system, a comfortable suspension seat, and noise and vibration reduction technologies

EASY TO MAINTAIN



Large engine hood openings, centralised filters and electrics with ground-level access reduce maintenance efforts. A computer interface is available for quick diagnostics and review of fault history

RELIABLE AND DURABLE



Both the engine and hydraulic systems are supplied from world-renowned manufacturers. Reinforced boom, arm and undercarriage, chromed pins and upgraded electronics on board provide excellent machine durability and reliability

MULTI-PURPOSE



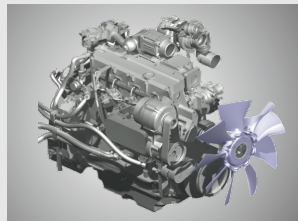
Access more applications with breaker piping and various bucket and track shoe options. This machine is ideal for a wide range of general construction tasks



*The illustration may include optional equipment.

POWERFUL ENGINE

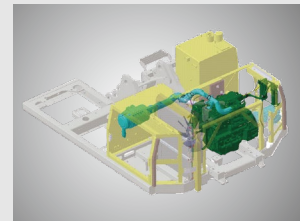
- DDE engine customised for SDLG
- Electronic unit pump
- Turbocharger + intercooler
- ECU controlled



- Well-matched engine and hydraulic systems
- 10 work modes
- Auto-idle function



- 2-stage air filters
- 3-stage fuel filters
- Fuel injector filter
- Water level alarm from oil-water separator
- Auto engine power cut-off upon fault detection
- Limp-home function

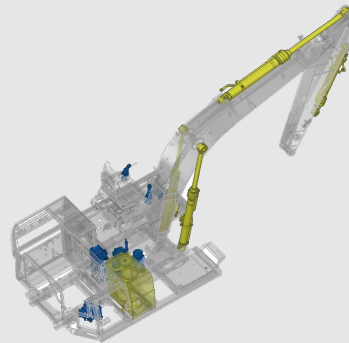
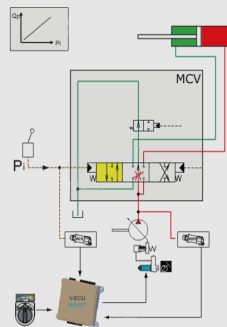


- New-generation SDLG electronics
- New-generation colour display
- Self fault diagnostics

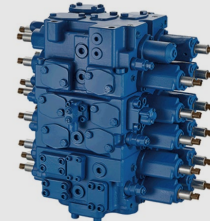
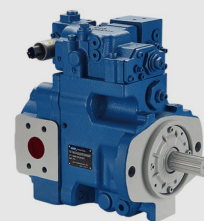


ADVANCED HYDRAULIC SYSTEM

- Positive-flow system with Hengli pump and valve
- Double pump confluence function

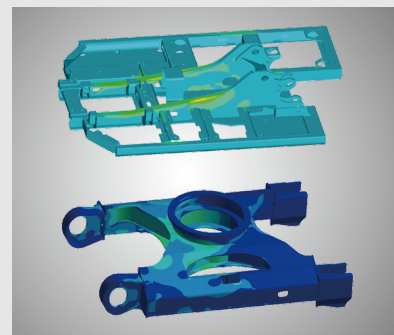


- Regeneration function
- Priority function
- Automatic travel speed selection

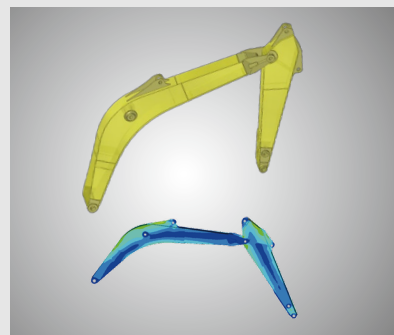


ROBUST STRUCTURES

- Reinforced X undercarriage with 35% higher strength



- Reinforced boom & arm
- Robotic welding
- Welding flaw detection



- Anti-wear bucket with 20% longer life
- Chromed pins



SAFE AND COMFORTABLE CABIN

- Excellent fields of vision
- Sliding windscreen
- Large wiper area
- 6-way adjustable fabric suspension seat



- Powerful A/C with multiple air outlets in a well-sealed cabin
- Tinted glass
- Silicone oil shock absorbers
- Multi-function colour LED display



EASY MAINTENANCE

- Wide engine hood openings
- Grouped filters, pressure testing port and electrics with ground-level access
- Computer diagnostics interface
- Good anti-slip



RICH OPTIONS

- Top/side mounted breakers
- Multiple track shoe width
- Rock/GP/LM buckets
- Additional work lights
- Cabin protection guards



*The above-mentioned illustrations may not refer to specific models.

ENGINE

	Unit	E6135H
Model	-	BF4M2012-11T2
Type	-	four-stroke, turbocharged, inter-cooled
Rated power	kW@rpm	80@2000
Max. torque	Nm@rpm	425@1500
Displacement	ml	4040
No. of cylinders	-	4
Cylinder bore×stroke	Φ×mm	101×126
Emission	-	Tier III (GB 20891-2007)

DRIVE AND BRAKES

	Unit	E6135H
Drive motors	-	2 axial piston motors
Max drawbar pull	kN	109.8
Max travel speed (low/high)	km/h	3.0/5.1
Service/parking brakes	-	Wet disc, spring applied, hydraulic release
Gradeability	°	35

HYDRAULIC SYSTEM

	Unit	E6135H
Hydraulic system type	-	Constant-power positive flow
Main pumps	-	2 axial piston pump
Max flow rate	L/min	2×130+20
Relief valve setting		
Implement circuit	bar	335
Travel circuit	bar	343
Swing circuit	bar	350
Pilot circuit	bar	39

SWING SYSTEM

	Unit	E6135H
Swing motor	-	1 axial piston motors
Swing brake	-	Wet disc
Swing speed	r/min	0-10.3

UNDERCARRIAGE

	Unit	E6135H
No. of track shoes	-	2×44
No. of top rollers	-	2×1
No. of bottom rollers	-	2×7
No. of track guards	-	2×1

ELECTRICAL SYSTEM

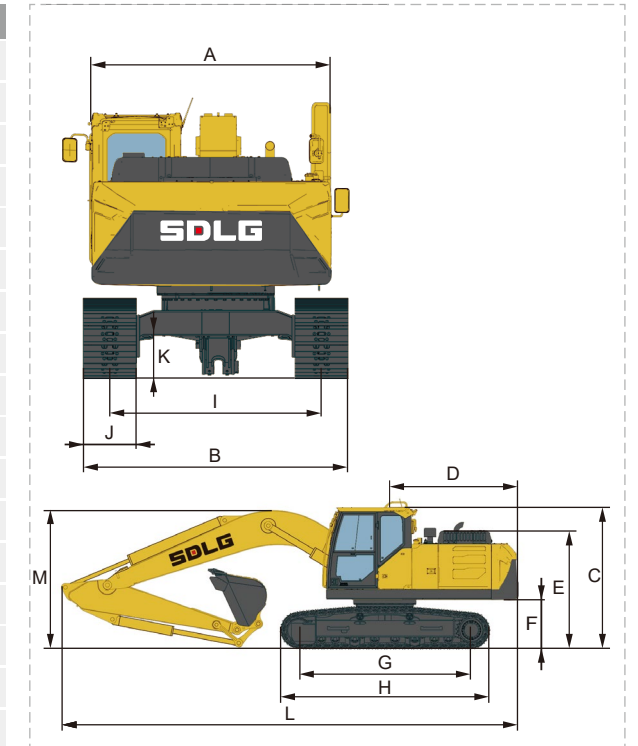
	Unit	E6135H
System voltage	V	24
Battery voltage	V	24
Battery capacity	Ah	200
Alternator voltage	V	28
Starter voltage	V	24

SERVICE REFILL CAPACITY

	Unit	E6135H
Fuel tank	L	290
Engine coolant	L	20
Engine oil	L	13
Swing drive device	L	2+0.5
Travel drive device	L	2×2.2
Hydraulic tank	L	100
Hydraulic system	L	180

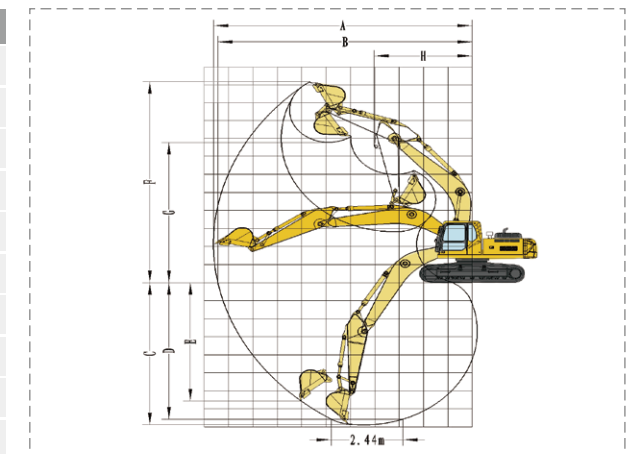
DIMENSIONS

	Unit	E6135H
Boom length	mm	4600
Arm length	mm	2500
A Overall width of upper assembly	mm	2490
B Overall width	mm	2490
C Overall height	mm	2830
D Tail swing radius	mm	2250
E Overall height of engine hood	mm	2449
F Counterweight clearance	mm	900
G Wheel base	mm	2870
H Track length	mm	3610
I Track gauge	mm	1990
J Shoe width	mm	500
K Min. ground clearance	mm	430
L Overall length	mm	7750
M Overall height of boom	mm	2830
Bucket capacity	m³	0.55
Operating weight	kg	12700



EXCAVATING RANGE

	Unit	E6135H
A Max. digging reach	mm	8330
B Max. digging reach on ground	mm	8330
C Max. digging depth	mm	5530
D Max. digging depth (horizontal 2.44m)	mm	5310
E Max. vertical wall digging depth	mm	5060
F Max. cutting height	mm	8420
G Max. dumping height	mm	5980
H Min. front swing radius	mm	2630
Max. excavating force of bucket (ISO)	kN	79.5
Max. excavating force of arm (ISO)	kN	61



ATTACHMENTS

Bucket	Model	Capacity/m³	Width/mm	Weight/kg	Number of teeth/Side cutters
	E6135H	0.5	980	481	5/2
Breaker (Side-mounted)	E6135H	0.6	1080	475	5/2
		0.48	890	445	4/2
		0.48	1006	515	5/4(rock bucket)
	Model	Diameter/mm	Weight/kg	Pressure/bar	Frequency/bpm
	E6135H	100	761	180~200	350~700

* The right of final interpretation of the abovementioned parameters shall be reserved by SDLG. No further notice will be given in case of any change. Illustrations in the text may not always be the standard illustrations for this model.